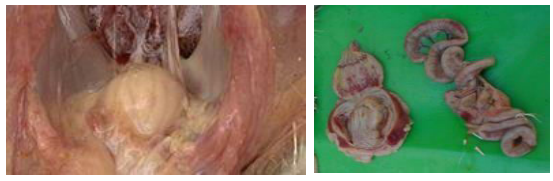




One step Rapid Immuno-chromatographic test for the detection of IBD virus in Avian Cloaca/Bursa of Fabricious swabs.

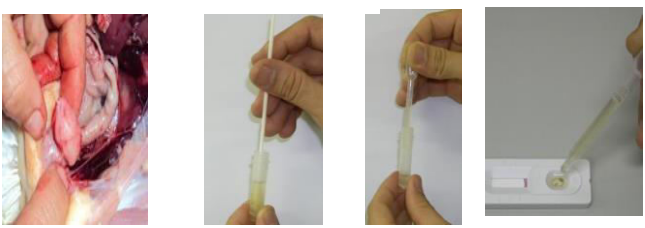
Infectious Bursal disease (IBD, Gumboro) is an acute, highly contagious viral infection in chickens manifested by inflammation and subsequent atrophy of the bursa of Fabricius, various degrees of nephroso-nephritis and immunosuppression. Clinically the disease is seen only in chickens older than 3 weeks. The feathers around the vent are usually stained with faeces containing plenty of urates. The period of most apparent clinical symptoms and high death rate is at the age of 3 - 6



weeks. Infection is via the oro-fecal route, with affected bird excreting high levels of the virus for approximately 2 weeks after infection. Disease may appear suddenly and morbidity typically reaches 100%. In the acute form birds are prostrated, debilitated and dehydrated. They produce a watery diarrhoea and may have swollen feces-stained vent. Most of the flock is recumbent and have ruffled feathers. Mortality rates vary with virulence of the strain involved.

When outbreaks do occur, biosecurity measures may be helpful in limiting the spread between sites, and tracing of contacts may indicate sites on which a more robust vaccination programme is indicated.

Test Procedure



Sample collection Collect suspension 3 drops to device

Assay Overview

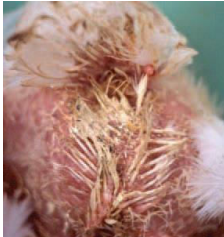
- quickVET IBDV Ag a test that uses two highly specific Monoclonal antibodies
- The Virus in the sample react with colloidal gold conjugated detection antibody on conjugate pad
- This labelled antigen-antibody complex is captured by the test area forming a red line.

Organism detected	IBD Virus
Sample type	Avian Cloaca/Bursa of Fabricious
Shelf Life	24 months
Storage	2-30 °C
Capture Antibody	Monoclonal Anti-IBDV Antibodies
Sensitivity	92.8%
Specificity	96.5 %
Comparison Test	RT-PCR
Species	Avian
Packing	1T,10T, 25T, Bulk
Ref. No	Q036-01
Cross Reactivity	No Cross Reactivity with MDV, NDV, ILT, REO, IB and CAV

Rapid IBDV Testing

- Quick results available in few minutes.
- Require no instrumentation.
- Easy to use.
- Kennel side/Point of Care test
- No capital expenditure.
- Do not require refrigerated storage.

Why IBDV Antigen Test?



- Routine Flock Screening
- Outbreak Investigation
- Vigilance programs and epidemiological studies.

Test Interpretation

